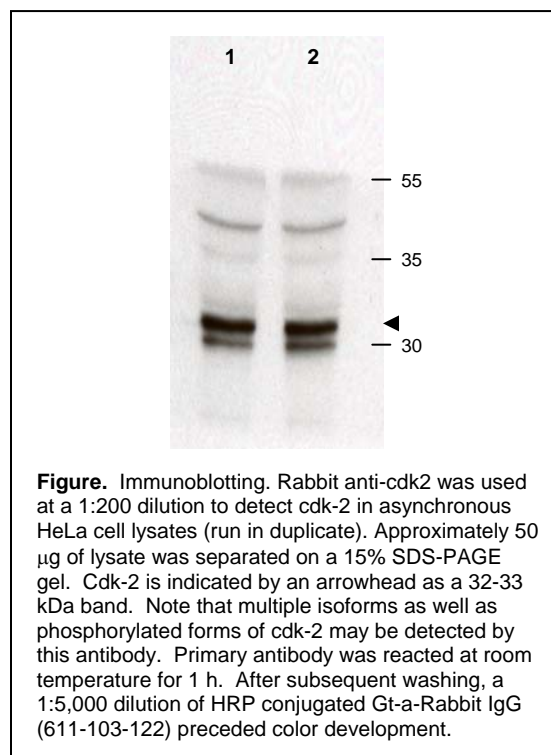


Certificate of Analysis**Product:** Anti-cdk2 Cyclin Dependent Kinase [Rabbit]**Code:** 100-401-161**Lot #** 19955**Size:** 100 ul**Physical State:** Liquid (sterile filtered)**Protein Concentration:** 85 mg/ml (by Refractometry) **Buffer:** None**Stabilizer:** None**Preservative:** 0.01% (w/v) Sodium Azide

Storage Conditions: Store vial at -20° C prior to opening. For extended storage, aliquot contents and freeze at -20° C or below. Avoid cycles of freezing and thawing. Centrifuge product if not completely clear after standing at room temperature. This product is stable for several weeks at 4° C as an undiluted liquid. Dilute only prior to immediate use. Expiration date is one (1) year from date of opening.

Background Information: The protein encoded by this gene is a member of the Ser/Thr protein kinase family. This protein kinase is highly similar to the gene products of *S. cerevisiae* *cdc28*, and *S. pombe* *cdc2*. It is a catalytic subunit of the cyclin-dependent protein kinase complex, whose activity is restricted to the G₁-S phase, and essential for cell cycle G₁/S phase transition. This protein associates with and regulated by the regulatory subunits of the complex including cyclin A or E, CDK inhibitor p21Cip1 (CDKN1A) and p27Kip1 (CDKN1B). Its activity is also regulated by its protein phosphorylation. Two alternatively spliced variants and multiple transcription initiation sites of this gene have been reported.

Application Note(s): Suitable for western blotting and other antibody based assays. Multiple isoforms as well as phosphorylated forms of cdk-2 may be detected by this antibody. Use paraffin embedded tissues for immunohistochemistry. Optimal titers for other applications should be determined by the researcher.



Recommended Dilutions:	ELISA	1:1,000 - 1:5,000
	WESTERN BLOT	1:200 - 1:1,000
	IMMUNOHISTOCHEMISTRY	1:200 - 1:1,000
	OTHER APPLICATIONS	User Optimized

Purity and Specificity: This product was prepared from monospecific antiserum by delipidation and defibrination. Antiserum will specifically react with a 33 kDa cdk2 protein from human, rat and mouse tissue. No reaction was observed against other related cyclin dependent kinases. Cross reactivity with cdk2 from other species may also occur.

Immunogen: This whole rabbit serum was prepared by repeated immunizations with a synthetic peptide corresponding to the C-terminus of the human cdk-2 protein conjugated to Keyhole Limpet Hemocyanin (KLH).

Related Product(s):

- #[611-703-127](#) Peroxidase Conjugated Affinity Purified Anti-RABBIT IgG (H&L) (DONKEY) MX10
- #[611-132-122](#) IRDye800 Conjugated Affinity Purified Anti-RABBIT IgG (H&L) (GOAT) MX10
- #[KIA-003](#) **MaxTag**[™] Anti-RABBIT IgG Kit for Immunoblotting
- #[MB-070](#) Blocking Buffer for Fluorescent Western Blotting
- #[B501-0500](#) BLOTTO
- #[BSA-30](#) 30% BOVINE SERUM ALBUMIN SOL'N in 0.85% sodium chloride (no preservative or stabilizer)

General References:

Elledge, S.J. and Spotswood, M. (1991) A new human p34 protein kinase CDK2, identified by complementation of a cdc28 mutation, is a homolog of Xenopus Eg1. *EMBO J.* **10**; 2653-2659.

Giordano, A., Lee, J.H., Scheppler, J.A., Herrmann, C., Harlow, E., Deuschle, U., Beach, D. and Franza, B. Jr. (1991) Cell cycle regulation of histone H1 kinase activity associated with the adenoviral protein E1A. *Science* **253**; 1271-1275.

Tsai, L.H., Harlow, E. and Myerson, M. (1991) Isolation of the human CDK2 gene that encodes the cyclin A and adenovirus E1A-associated p33 kinase. *Nature* **353**; 174-177.

Note: This product is for research use only and is not intended for therapeutic or diagnostic applications. Please contact a technical service representative for more information.

All products of animal origin manufactured by Rockland Immunochemicals are derived from starting materials of North American origin. Collection was performed in United States Department of Agriculture (USDA) inspected facilities and all materials have been inspected and certified to be free of disease and suitable for exportation.

All properties listed are typical characteristics and are not specifications. All suggestions and data are offered in good faith but without guarantee as conditions and methods of use of our products are beyond our control. The prospective user must determine the suitability of our materials before adopting them on a commercial scale. Suggested uses of our products are not recommendations to use our products in violation of any patent or as a license under any patent of Rockland Immunochemicals, Inc. If you require a commercial license to use this material and do not have one, then return this material, unopened to: Rockland Inc., P.O. BOX 326, Gilbertsville, Pennsylvania, USA.