

Certificate of Analysis
Product: Affinity Purified Anti-eIF3S6/Int6 [Rabbit]

Code: 600-401-A62

Lot # 20874

Size: 100 µg

Physical State: Liquid (sterile filtered)

Antibody Concentration: 0.8 mg/ml (by UV absorbance at 280 nm)

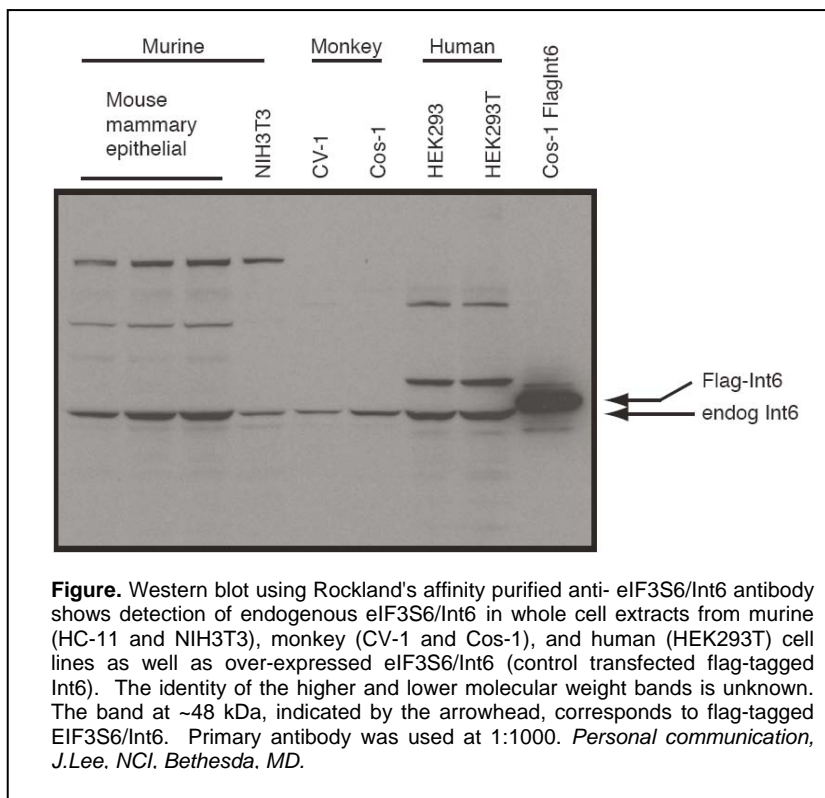
Buffer: 0.02 M Potassium Phosphate, 0.15 M Sodium Chloride, pH 7.2

Stabilizer: None

Preservative: 0.01% (w/v) Sodium Azide

Storage Conditions: Store vial at -20° C or below prior to opening. Dilute only prior to immediate use. For extended storage, aliquot contents and freeze at -20° C or below. Avoid cycles of freezing and thawing. Expiration date is one (1) year from date of opening.

Background Information: Int6 is a candidate tumor suppressor in multiple neoplasms, and in particular, breast and lung cancers. The Int6 locus was initially identified as a common insertion site (CIS) in a genetic screen for transforming sequences in a breast cancer mouse model system. Insertion of mouse mammary tumor virus (MMTV) into this locus results in the production of an amino-terminal truncated gene product. Expression of the truncated Int6 product corresponds to cellular transformation in both *in vivo* and *in vitro* systems. This gene product plays a role in regulating translation initiation and is a component of the eIF3 translation initiation complex. There is evidence that suggests that Int6 may impart a negative role in the general translational machinery while promoting an increase in the expression of a subset of stress-responsive genes. Taken together, it is of great interest to further study the mechanism by which Int6 is involved in regulating cell growth.

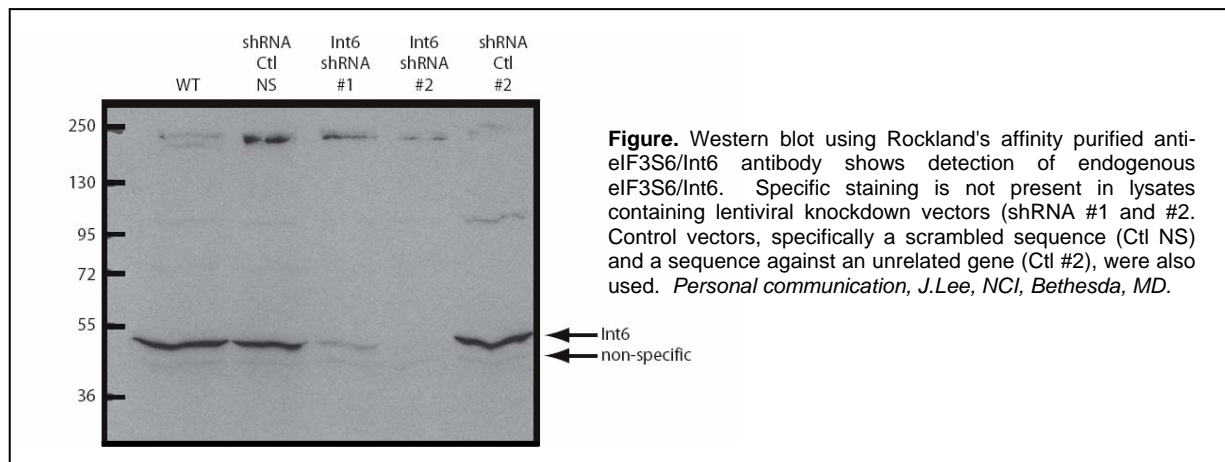


Application Note(s): This affinity purified antibody has been tested for use in ELISA and western blotting. Specific conditions for reactivity should be optimized by the end user. Expect a band approximately 48 kDa in size corresponding to eIF3S6/Int6 by western blotting in the appropriate cell lysate or extract. This antibody is capable of detecting both over-expressed and endogenous eIF3S6/Int6.

Recommended Dilutions:

ELISA	1:90,000
WESTERN BLOT	1:1,000
IMMUNOPRECIPITATION	User Optimized
OTHER APPLICATIONS	User Optimized

Purity and Specificity: This product was affinity purified from monospecific antiserum by immunoaffinity chromatography. This antibody is specific for mouse eIF3S6/Int6 protein. A BLAST analysis was used to suggest cross-reactivity with most eIF3Se/Int6 isoforms from mouse, human, rat, dog, bovine, and monkey based on 100% homology with the immunizing sequence. Cross-reactivity with EIF3S6/Int6 from other sources has not been determined.



Immunogen: This affinity purified antibody was prepared from whole rabbit serum produced by repeated immunizations with a synthetic peptide corresponding to a region near the C-terminus of mouse EIF3S6/Int6.

Relevant Links: NCBI [NP_032414](https://pubmed.ncbi.nlm.nih.gov/15711111/) Swiss-Prot [P60229](https://www.uniprot.org/uniprot/P60229)

General References:

Buttitta F, Martella C, Barassi F, Felicioni L, Salvatore S, Rosini S, D'Antuono T, Chella A, Mucilli F, Sacco R, Mezzetti A, Cuccurullo F, Callahan R, Marchetti A. (2005) Int6 expression can predict survival in early-stage non-small cell lung cancer patients. *Clin Cancer Res* 11(9):3198-204.

Lowther, W., Wiley, K., Smith, G.H. and Callahan, R. (2005) A new common integration site, Int7, for the mouse mammary tumor virus in mouse mammary tumors identifies a gene whose product has furin-like and thrombospondin-like sequences. *J. Virol.* 79 (15), 10093-10096.

Bandyopadhyay, A., Matsumoto, T. and Maitra, U. (2000) Fission yeast Int6 is not essential for global translation initiation, but deletion of int6(+) causes hypersensitivity to caffeine and affects spore formation. *Mol. Biol. Cell* 11 (11), 4005-4018.

Kozak, C.A., Su, Y., Raj, N.B. and Pitha, P.M. (1999) Identification and genetic mapping of differentially expressed genes in mice differing at the If1 interferon regulatory locus. *Mamm. Genome* 10 (9), 853-857.

Diella, F., Levi, G. and Callahan, R. (1997) Characterization of the INT6 mammary tumor gene product. *DNA Cell Biol.* 16 (7), 839-847.

Related Products:

- #[611-703-127](#) Peroxidase Conjugated Affinity Purified Anti-RABBIT IgG (H&L) (DONKEY) MX10
- #[611-132-122](#) IRDye® 800 Conjugated Affinity Purified Anti-RABBIT IgG (H&L) (GOAT) MX10
- #[611-144-122](#) DyLight™680 Conjugated Affinity Purified Anti-RABBIT IgG (H&L) (GOAT) MX10
- #[B501-0500](#) BLOTTO (500 g)
- #[BSA-30](#) 30% BOVINE SERUM ALBUMIN SOL'N in 0.85% sodium chloride (no preservative or stabilizer) (500 ml)
- #[B304](#) NORMAL GOAT SERUM (NGS) (10 ml)
- #[KIA-003](#) **MaxTag™** Anti-RABBIT IgG Kit for Immunoblotting
- #[MB-070](#) Blocking Buffer for Fluorescent Western Blotting

Note: This product is for research use only and is not intended for therapeutic or diagnostic applications. Please contact a technical service representative for more information. All products of animal origin manufactured by Rockland Immunochemicals are derived from starting materials of North American origin. Collection was performed in United States Department of Agriculture (USDA) inspected facilities and all materials have been inspected and certified to be free of disease and suitable for exportation. All properties listed are typical characteristics and are not specifications. All suggestions and data are offered in good faith but without guarantee as conditions and methods of use of our products are beyond our control. All claims must be made within 30 days following the date of delivery. The prospective user must determine the suitability of our materials before adopting them on a commercial scale. Suggested uses of our products are not recommendations to use our products in violation of any patent or as a license under any patent of Rockland Immunochemicals, Inc. If you require a commercial license to use this material and do not have one, then return this material, unopened to: Rockland Inc., P.O. BOX 326, Gilbertsville, Pennsylvania, USA.