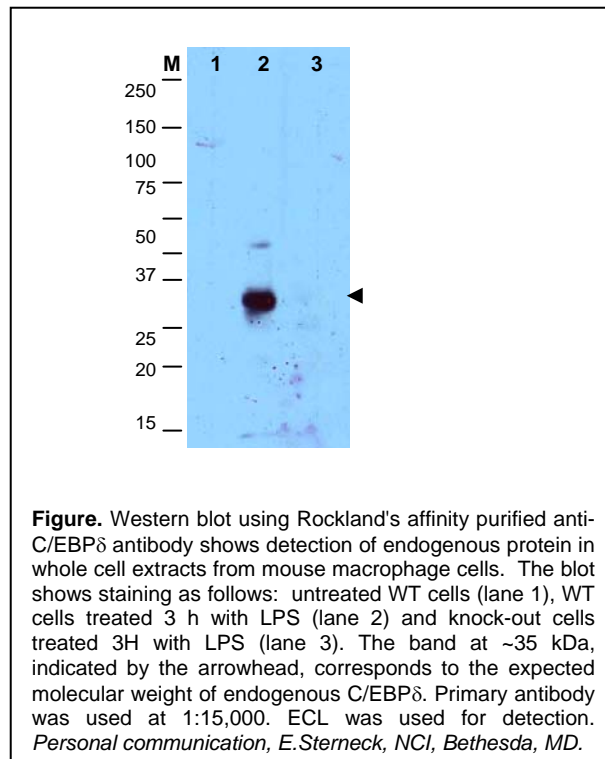


Certificate of Analysis**Product:** Affinity Purified Anti-C/EBP delta [Rabbit] TRIAL SIZE**Code:** 600-401-A61S**Lot #** 19874**Size:** 25 μ l**Physical State:** Liquid (sterile filtered)**Antibody Concentration:** 0.83 mg/ml (by UV absorbance at 280 nm)**Buffer:** 0.02 M Potassium Phosphate, 0.15 M Sodium Chloride, pH 7.2**Stabilizer:** None**Preservative:** 0.01% (w/v) Sodium Azide

Storage Conditions for Trial Size: Store vial at -20° C or below prior to opening. This vial contains a relatively low volume of reagent (25 μ l). To minimize loss of volume dilute 1:10 by adding 225 μ l of the buffer stated above directly to the vial. Recap, mix thoroughly and briefly centrifuge to collect the volume at the bottom of the vial. Use this intermediate dilution when calculating final dilutions as recommended below. Store the vial at -20° C or below after dilution. Avoid cycles of freezing and thawing. Expiration date is three (3) months from date of opening.

Background Information: C/EBP proteins are DNA-binding proteins that are important transcriptional activators in the regulation of genes involved in immune and inflammatory responses and may play an important role in the regulation of the several genes associated with activation and/or differentiation of macrophages. Members of the C/EBP transcription factor family are related by a high degree of amino acid sequence identity to the basic leucine zipper DNA-binding domain and show distinct but overlapping patterns of tissue- and stage-restricted expression. Osada et al. identified the consensus binding site for the family as RTTGCGYAAAY (R = A or G, and Y = C or T). Phosphorylation of C/EBP δ may increase binding activity, whereas phosphorylation of the α and β family members may decrease binding affinity. C/EBP δ is a nuclear protein that binds DNA as a dimer and can form stable heterodimers with all other C/EBP family members.

Application Note(s): This affinity purified antibody has been tested for use in ELISA and western blotting. Specific conditions for reactivity should be optimized by the end user. Expect a band approximately 35 kDa in size corresponding to C/EBP δ by western blotting in the appropriate cell lysate or extract. The predicted molecular weight of mouse C/EBP δ is 28.8 kDa. This antibody is capable of detecting both over-expressed and endogenous C/EBP δ .

**Recommended Dilutions:**

ELISA
WESTERN BLOT
IMMUNOPRECIPITATION
OTHER APPLICATIONS

1:40,000
 1:2,000 to 1:20,000
 User Optimized
 User Optimized

Purity and Specificity: This product was affinity purified from monospecific antiserum by immunoaffinity chromatography. This antibody is specific for mouse C/EBP delta protein. A BLAST analysis was used to suggest cross-reactivity with C/EBP δ from human sources based on 100% homology with the immunizing sequence. No cross-reactivity is observed with mouse C/EBP α or C/EBP β . Reactivity with C/EBP δ from other sources has not been determined.

Immunogen: This affinity purified antibody was prepared from whole rabbit serum produced by repeated immunizations with a recombinant protein corresponding to the amino terminus of mouse C/EBP.

Relevant Links: NCBI [NP_031705](#) Swiss-Prot [Q00322](#)

Related Products:

#[611-703-127](#) Peroxidase Conjugated Affinity Purified Anti-RABBIT IgG (H&L) (DONKEY) MX10
 #[611-132-122](#) IRDye® 800 Conjugated Affinity Purified Anti-RABBIT IgG (H&L) (GOAT) MX10
 #[B501-0500](#) BLOTTO (500 g)
 #[BSA-30](#) 30% BOVINE SERUM ALBUMIN SOL'N in 0.85% sodium chloride (no preservative or stabilizer) (500 ml)
 #[B304](#) NORMAL GOAT SERUM (NGS) (10 ml)
 #[KIA-003](#) **MaxTag™** Anti-RABBIT IgG Kit for Immunoblotting
 #[MB-070](#) Blocking Buffer for Fluorescent Western Blotting

General References:

Osada S., Yamamoto H., Nishihara T., and Imagawa M. (1996) DNA binding specificity of the CCAAT/enhancer-binding protein transcription factor family. *J Biol Chem.* **271**(7):3891-6

Thangaraju M., Rudelius M., Bierie B., Raffeld M., Sharan S., Hennighausen L., Huang A.M., and Sterneck E. (2005) C/EBP δ is a crucial regulator of pro-apoptotic gene expression during mammary gland involution. *Development* **132** (21), 4675-85.

Huang A.M., Montagna C., Sharan S., Ni Y., Ried T., and Sterneck E. (2004) Loss of CCAAT/enhancer binding protein delta promotes chromosomal instability. *Oncogene* **23**(8):1549-57.

Sterneck E., Zhu S., Ramirez A., Jorcano J.L., Smart J.C. (2006) Conditional ablation of C/EBP beta demonstrates its keratinocyte-specific requirement for cell survival and mouse skin tumorigenesis. *Oncogene.* **25**(8):1272-6.

Zhou S. and Dewille J.W. (2007) Proteasome-mediated CCAAT/enhancer-binding protein delta (C/EBPdelta) degradation is ubiquitin-independent. *Biochem. J.* **405** (2), 341-349.

Thangaraju ,M., Ananth S., Martin P.M., Roon P., Smith S.B., Sterneck E., Prasad P.D. and Ganapathy V. (2006) c/ebpdelta Null mouse as a model for the double knock-out of slc5a8 and slc5a12 in kidney. *J. Biol. Chem.* **281** (37), 26769-26773.

Shin C.S., Jeon M.J., Yang J.Y., Her S.J., Kim D., Kim S.W. and Kim S.Y. (2006) CCAAT/enhancer-binding protein delta activates the Runx2-mediated transcription of mouse osteocalcin II promoter. *J. Mol. Endocrinol.* **36** (3), 531-546.

Pessler-Cohen D., Pekala P.H., Kovsan J., Bloch-Damti A., Rudich A. and Bashan N. (2006) GLUT4 repression in response to oxidative stress is associated with reciprocal alterations in C/EBP alpha and delta isoforms in 3T3-L1 adipocytes. *Arch. Physiol. Biochem.* **112** (1), 3-12.

Clarkson,R.W., Chen,C.M., Harrison,S., Wells,C., Muscat,G.E. and Waters,M.J. (1995) Early responses of trans-activating factors to growth hormone in preadipocytes: differential regulation of CCAAT enhancer-binding protein-beta (C/EBP beta) and C/EBP delta. *Mol. Endocrinol.* **9** (1), 108-120.

Note: This product is for research use only and is not intended for therapeutic or diagnostic applications. Please contact a technical service representative for more information. All products of animal origin manufactured by Rockland Immunochemicals are derived from starting materials of North American origin. Collection was performed in United States Department of Agriculture (USDA) inspected facilities and all materials have been inspected and certified to be free of disease and suitable for exportation. All properties listed are typical characteristics and are not specifications. All suggestions and data are offered in good faith but without guarantee as conditions and methods of use of our products are beyond our control. The prospective user must determine the suitability of our materials before adopting them on a commercial scale. Suggested uses of our products are not recommendations to use our products in violation of any patent or as a license under any patent of Rockland Immunochemicals, Inc. If you require a commercial license to use this material and do not have one, then return this material, unopened to: Rockland Inc., P.O. BOX 326, Gilbertsville, Pennsylvania, USA.