



800-656-7625

fax 610-367-7825

Certificate of Analysis

Product: Affinity Purified anti-6X His EPITOPE TAG (Rabbit)

Code: 600-401-382

Lot #: 18450

Size: 100 μ g

Physical State: Liquid (sterile filtered)

Antibody Concentration: 1.10 mg/ml (by UV absorbance at 280 nm)

Buffer: 0.02 M Potassium Phosphate, 0.15 M Sodium Chloride, pH 7.2

Stabilizer: None

Preservative: 0.01% (w/v) Sodium Azide

Storage Conditions: Store vial at -20° C. For extended storage aliquot contents and freeze at -20° C or below. Avoid cycles of freezing and thawing. Dilute only prior to immediate use. Expiration date is one (1) year from date of restoration.

Background Information: Epitope tags are short peptide sequences that are easily recognized by tag-specific antibodies. Due to their small size, epitope tags do not affect the tagged protein's biochemical properties. Most often sequences encoding the epitope tag are included with target DNA at the time of cloning to produce fusion proteins containing the epitope tag sequence. This allows anti-epitope tag antibodies to serve as universal detection reagents for any tag containing protein produced by recombinant means. This means that anti-epitope tag antibodies are a useful alternative to generating specific antibodies to identify, immunoprecipitate or immunoaffinity purify a recombinant protein. The anti-epitope tag antibody is usually functional in a variety of antibody-dependent experimental procedures. Expression vectors producing epitope tag fusion proteins are available for a variety of host expression systems including bacteria, yeast, insect and mammalian cells. Rockland Immunochemicals produces anti-epitope tag antibodies against many common epitope tags including Myc, GST, GFP, 6X His, MBP, FLAG and HA. Rockland Immunochemicals also produces antibodies to other tags including FITC, Rhodamine (TRITC), DNP and biotin.

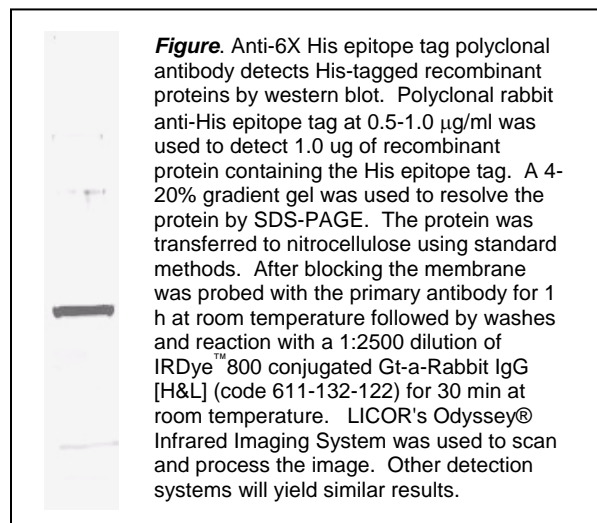


Figure. Anti-6X His epitope tag polyclonal antibody detects His-tagged recombinant proteins by western blot. Polyclonal rabbit anti-His epitope tag at 0.5-1.0 μ g/ml was used to detect 1.0 μ g of recombinant protein containing the His epitope tag. A 4-20% gradient gel was used to resolve the protein by SDS-PAGE. The protein was transferred to nitrocellulose using standard methods. After blocking the membrane was probed with the primary antibody for 1 h at room temperature followed by washes and reaction with a 1:2500 dilution of IRDye™ 800 conjugated Gt-a-Rabbit IgG [H&L] (code 611-132-122) for 30 min at room temperature. LICOR's Odyssey® Infrared Imaging System was used to scan and process the image. Other detection systems will yield similar results.

Application Note(s): Anti-6X His is optimally suited for monitoring expression of His-tagged fusion proteins. As such, anti-6X His/6X His can be used to identify fusion proteins that contain the 6X His epitope. The antibody recognizes the His tag fused either to the amino- or carboxy- termini of targeted proteins. This antibody has been tested by ELISA and western blotting against both the immunizing peptide and His containing recombinant proteins. Although not tested, this antibody is likely functional for immunoprecipitation and immunocytochemistry.

Recommended Dilutions:	ELISA	1:10,000 - 1:40,000
	WESTERN BLOT	1:1,000 - 1:3,000
	IMMUNOHISTOCHEMISTRY	1:500 - 1:2,000
	OTHER APPLICATIONS	User Optimized

Purity and Specificity: This affinity-purified antibody is directed against 6X His motif and is useful in determining its presence in various assays. This polyclonal anti-6X His-tag antibody detects over-expressed proteins containing the 6X His epitope tag. To date this antibody has reacted with all His tagged proteins so far tested. In western blotting of bacterial extracts the antibody does not cross-react with endogenous proteins. The antibody recognizes the His-tag (His-His-His-His-His) fused to either the amino- or carboxy- termini of targeted proteins in transfected or transformed cells.

Immunogen: This antibody was purified from whole rabbit serum prepared by repeated immunizations with 6X His epitope tag peptide H-H-H-H-H conjugated to KLH using maleimide.

Related Product(s):

<u>Unconjugated</u>		<u>Conjugated</u>	
#600-401-382	Affinity Purified Anti-6X His TAG (RABBIT)	#600-406-381	Biotin Affinity Purified Anti-Myc TAG (RABBIT)
#200-4136	IgG Fraction of Anti-BETA GAL (E.coli) (RABBIT)	#600-406-382	Biotin Affinity Purified Anti-6X His TAG (RABBIT)
#600-101-098	Affinity Purified Anti-BIOTIN (GOAT)	#600-406-383	Biotin Affinity Purified Anti-FLAG (RABBIT)
#100-401-463	Anti-Chloramphenicol-Acetyl Transferase (RABBIT)	#600-406-384	Biotin Affinity Purified Anti-HEMAGGLUTININ (RABBIT)
#200-B01-380	Protein A Purified Hamster Mab Anti-DNP	#200-106-150	Biotin IgG Fraction of Anti-LUCIFERASE (Firefly) GOAT
#600-101-096	Affinity Purified Anti-FITC (GOAT)	#600-106-200	Biotin Affinity Purified Anti-GST (GOAT)
#600-401-383	Affinity Purified Anti-FLAG (RABBIT)	#600-106-215	Biotin Affinity Purified Anti-GFP (GOAT)
#600-101-215	Affinity Purified Anti-GFP (GOAT)	#200-4636	Biotin IgG Fraction of Anti-BETA GAL (E.coli) (RABBIT)
#600-101-200	Affinity Purified Anti-GST (GOAT)	#600-106-096	Biotin Affinity Purified Anti-FITC (GOAT)
#600-401-384	Affinity Purified Anti-HEMAGGLUTININ (RABBIT)	#600-406-385	Biotin Affinity Purified Anti-MBP TAG (RABBIT)
#200-101-150	IgG Fraction of Anti-LUCIFERASE (Firefly) GOAT	#600-406-386	Biotin Affinity Purified Anti-VSV-G TAG (RABBIT)
#200-401-385	IgG Fraction of Anti-MBP TAG (RABBIT)	#200-119-200	Agarose Affinity Purified Anti-GST (GOAT)
#600-401-381	Affinity Purified Anti-Myc TAG (RABBIT)	#200-419-036	Agarose Anti-BETA GAL (E.coli) (RABBIT)
#200-301-246	Protein A Purified Mouse Mab Anti-RHODAMINE	#611-132-122	IRDye800 Anti-RABBIT IgG [H&L] MX10 (GOAT)
#600-401-386	Affinity Purified Anti-VSV-G TAG (RABBIT)	#611-703-127	HRP Anti-RABBIT IgG [H&L] MX10 (DONKEY)

USDA Certification: All products of animal origin manufactured by Rockland Immunochemicals are derived from starting materials of North American origin. Collection was performed in United States Department of Agriculture (USDA) inspected facilities and all materials have been inspected and certified to be free of disease and suitable for exportation.

Note: This product is for research use only and is not intended for therapeutic or diagnostic applications. Please contact a technical service representative for more information.