

Certificate of Analysis
Product: Affinity Purified Anti-Acetylated Lysine (AcK) [Rabbit]

Code: 600-401-939

Lot # 20227

Size: 100 µg

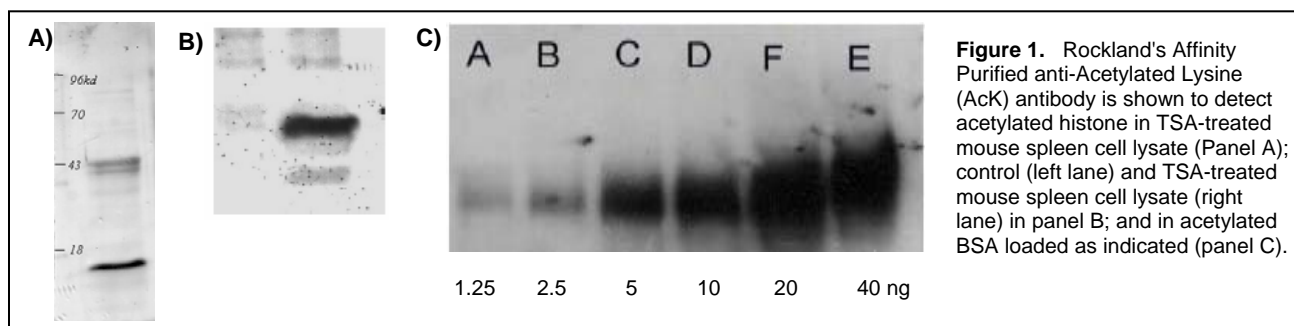
Physical State: Liquid (sterile filtered)

Buffer: 0.02 M Potassium Phosphate, 0.15 M Sodium Chloride, pH 7.2

Antibody Concentration: 1.0 mg/ml

Stabilizer: 50% Glycerol

Preservative: None

Storage Conditions: Store vial at -20° C or below prior to opening. For extended storage, aliquot contents and store at -20° C or below. Avoid cycles of freezing and thawing. Dilute only prior to immediate use. Expiration date is one (1) year from date of opening product.

Application Note(s): This affinity purified antibody is suitable for use in ELISA, western blotting, immunofluorescence microscopy and immunoprecipitation assays. The antibody reacts specifically with acetylated lysine residues. Although not tested, this antibody is likely functional in RIA, flow cytometry and immunohistochemistry.

Recommended Dilutions:

ELISA	1:2,500
WESTERN BLOT	1:1,000
IMMUNOPRECIPITATION	10 µg/mg sample
IMMUNOFLUORESCENCE	1:50

Purity and Specificity: This product was prepared from monospecific antiserum by immunoaffinity chromatography using acetylated lysine peptide coupled to agarose. Assay by immunoelectrophoresis resulted in a single precipitin arc against anti-Rabbit IgG. Reactivity is specific for acetylated lysine.

Immunogen: This affinity purified antibody was prepared from whole rabbit serum produced by repeated immunizations with acetylated lysine conjugated KLH.

Related Product(s):

- [#600-401-939](#) Affinity Purified Anti-Acetylated Lysine (AcK) [Rabbit]
- [#600-403-939](#) Peroxidase Conjugated Affinity Purified Anti-Acetylated Lysine (AcK) [Rabbit]
- [#600-406-939](#) Biotin Conjugated Affinity Purified Anti-Acetylated Lysine (AcK) [Rabbit]
- [#611-703-127](#) Peroxidase Conjugated Affinity Purified Anti-RABBIT IgG (H&L) (DONKEY) MX10

Note: This product is for research use only and is not intended for therapeutic or diagnostic applications. Please contact a technical service representative for more information.

All products of animal origin manufactured by Rockland Immunochemicals are derived from starting materials of North American origin. Collection was performed in United States Department of Agriculture (USDA) inspected facilities and all materials have been inspected and certified to be free of disease and suitable for exportation.

All properties listed are typical characteristics and are not specifications. All suggestions and data are offered in good faith but without guarantee as conditions and methods of use of our products are beyond our control. The prospective user must determine the suitability of our materials before adopting them on a commercial scale. Suggested uses of our products are not recommendations to use our products in violation of any patent or as a license under any patent of Rockland Immunochemicals, Inc. If you require a commercial license to use this material and do not have one, then return this material, unopened to: Rockland Inc., P.O. BOX 326, Gilbertsville, Pennsylvania, USA.