



800-656-7625

fax 610-367-7825

### Certificate of Analysis

**Product:** Protein A Purified Anti-AGAP2 (Rabbit)

**Code:** 200-401-946

**Lot #:** 17997

**Size:** 100 µg

**Physical State:** Lyophilized

**Antibody Concentration:** 2.0 mg/ml (by UV absorbance at 280 nm)

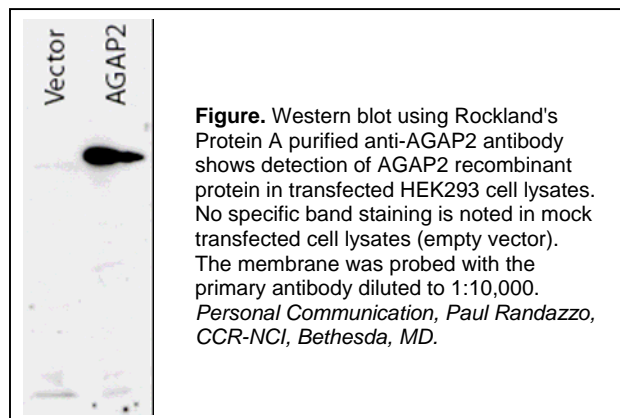
**Buffer:** 0.02 M Potassium Phosphate, 0.15 M Sodium Chloride, pH 7.2

**Stabilizer:** None

**Preservative:** 0.01% (w/v) Sodium Azide

**Storage Conditions:** Store vial at 4° C prior to opening. Reconstitute with 50 µl deionized water or equivalent. Dilute only prior to immediate use. For extended storage aliquot contents and freeze at -20° C or below. Avoid cycles of freezing and thawing. Expiration date is one (1) year from date of opening.

**Background Information:** AGAP2 (also known as centaurin-gamma1, ARF-GAP with GTP-binding protein-like, ankyrin repeat and pleckstrin homology domains 2, Phosphatidylinositol-3-kinase enhancer, PIKE, GTP-binding and GTPase activating protein 2 and GGAP2) is a GTPase activating protein that inactivates Arf. The expression of AGAP2 is amplified in human glioblastoma cells. AGAP2 protein binds to and activates the protein kinase Akt and prevents apoptosis of cancer cells. AGAP2 also increases motility and invasive activity of cancer cells. AGAP2 may serve as a diagnostic and therapeutic target of human cancer.



<b>Recommended Dilutions:</b>	<b>ELISA</b>	1:40,000 - 1:200,000
	<b>WESTERN BLOT</b>	1:5,000 - 1:20,000
	<b>IF MICROSCOPY</b>	User Optimized
	<b>OTHER APPLICATION</b>	User Optimized

**Application Note(s):** This protein A purified antibody has been tested for use in ELISA and western blot. Specific conditions for reactivity should be optimized by the end user. Expect a band approximately 90 kDa in size corresponding to AGAP2 protein by western blotting in the appropriate cell lysate or extract.

**Purity and Specificity:** This protein A purified antibody is directed against human AGAP2 protein. The product was purified from monospecific antiserum by protein A chromatography. A BLAST analysis was used to suggest cross reactivity with AGAP2 protein from mouse and rat based on 93% and 95% protein:protein homologies, respectively, with the immunizing sequence. Reactivity against homologues from other sources is not known.

**Immunogen:** This protein A purified antibody was prepared from whole rabbit serum produced by repeated immunizations with a recombinant protein corresponding to amino acids 1-836 of human AGAP2 protein.

**Relevant Links:** NCBI [NP\\_055585](#) Swis-Prot [Q99490](#)

**Predicted Molecular Weight:** MW 90.0 kDa (836 aa)

**General References:**

Nie Z, Fei J, Premont RT, Randazzo PA (2005). The Arf GAPs AGAP1 and AGAP2 distinguish between the adaptor protein complexes AP-1 and AP-3. *J Cell Sci.* **118**(Pt 15):3555-66.

Ahn JY, Hu Y, Kroll TG, Allard P, Ye K(2004) PIKE-A is amplified in human cancers and prevents apoptosis by up-regulating Akt. *Proc Natl Acad Sci U S A.* **101**(18):6993-8. (Please note PIKA-A is AGAP2)

Xia C, Ma W, Stafford LJ, Liu C, Gong L, Martin JF, Liu M (2003). GGAPs, a new family of bifunctional GTP-binding and GTPase-activating proteins. *Mol Cell Biol.* **23**(7):2476-88.

**Related Products:**

#611-703-127	Peroxidase Conjugated Affinity Purified Anti-RABBIT IgG (H&L) (DONKEY) MX10	
#611-132-122	IRDye800 Conjugated Affinity Purified Anti-RABBIT IgG (H&L) (GOAT) MX10	
#B501-0500	500 g	BLOTTO
#BSA-30	500 ml	30% BOVINE SERUM ALBUMIN SOL'N in 0.85% sodium chloride (no preservative or stabilizer)
#B304	10 ml	NORMAL GOAT SERUM (NGS)
#KIA-003	<b>MaxTag</b> <sup>™</sup> Anti-RABBIT IgG Kit for Immunoblotting	
#MB-070	Blocking Buffer for Fluorescent Western Blotting	

**USDA Certification:** All products of animal origin manufactured by Rockland Immunochemicals are derived from starting materials of North American origin. Collection was performed in United States Department of Agriculture (USDA) inspected facilities and all materials have been inspected and certified to be free of disease and suitable for exportation.

**Note:** This product is for research use only and is not intended for therapeutic or diagnostic applications. Please contact a technical service representative for more information.