

Certificate of Analysis

Product: Affinity Purified Anti-F-Box Protein Fbp5A (Rabbit)

Code: 600-401-490

Lot #: 17994

Size: 100 µg

Physical State: Liquid (sterile filtered)

Antibody Concentration: 1.3 mg/ml (by UV absorbance at 280 nm)

Buffer: 0.02 M Potassium Phosphate, 0.15 M Sodium Chloride, pH 7.2

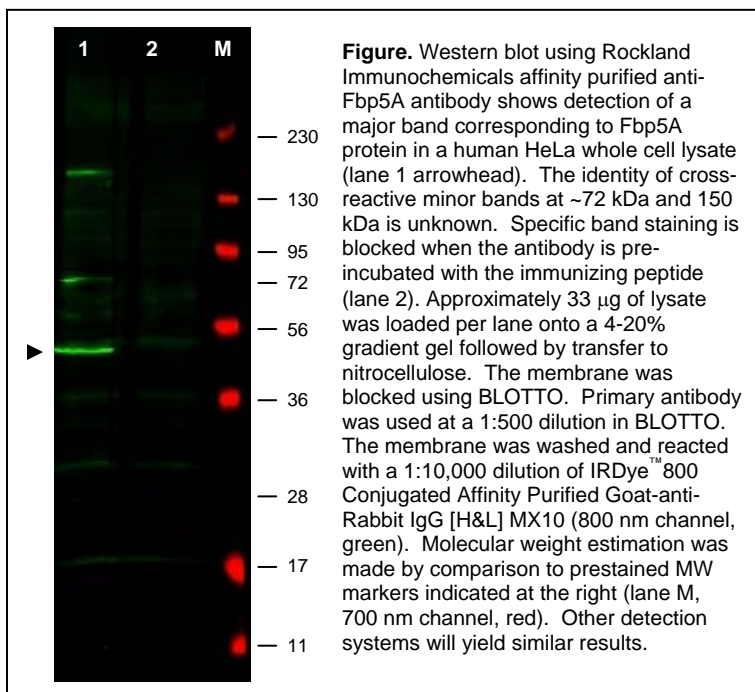
Stabilizer: None

Preservative: 0.01% (w/v) Sodium Azide

Background Information: Fbp5A is a member of the F-box protein family that is characterized by an approximately 40 amino acid motif, the F-box. The F-box proteins constitute one of the four subunits of the ubiquitin protein ligase complex called SCFs (SKP1-cullin-F-box), which function in phosphorylation-dependent ubiquitination. The F-box proteins are divided into 3 classes: Fbws containing WD-40 domains, Fbls containing leucine-rich repeats, and Fbxs containing either different protein-protein interaction modules or no recognizable motifs. The protein encoded by this gene belongs to the Fbxs class. This protein is similar to *Xenopus* early mitotic inhibitor-1 (Emi1), which is a mitotic regulator that interacts with Cdc20 and inhibits the anaphase-promoting complex.



Figure 2. Immunohistochemistry. Rockland's Affinity Purified anti-Fbp5a antibody shows strong cytoplasmic and membranous staining of bile duct cells in human liver tissue. Tissue was formalin-fixed and paraffin embedded. Brown color indicates presence of protein, blue color shows cell nuclei. *Personal Communication, Kenneth Wester, www.proteinatlas.org, Uppsala, Sweden.*



Storage Conditions: Store vial at -20° C prior to opening. Dilute only prior to immediate use. For extended storage aliquot contents and freeze at -20° C or below. Avoid cycles of freezing and thawing. Expiration date is one (1) year from date of opening.

Application Note(s): This affinity-purified antibody has been tested for use in ELISA, immunohistochemistry and western blot. Specific conditions for reactivity should be optimized by the end user. Expect a band approximately 51 kDa in size corresponding to Fbp5A protein by western blotting in the appropriate cell lysate or extract.

Recommended Dilutions:	ELISA	1:5,000 - 1:20,000
	WESTERN BLOT	1:500 - 1:3,000
	IMMUNOHISTOCHEMISTRY	1:500 - 1:3,000
	OTHER APPLICATIONS	User Optimized

Purity and Specificity: This affinity-purified antibody is directed against human Fbp5A protein. The product was affinity purified from monospecific antiserum by immunoaffinity purification. A BLAST analysis was used to suggest cross reactivity with Fbp5A protein from human and chimpanzee based on 100% homology with the immunizing sequence. Expect partial reactivity with Fbp5A from dog based on partial (~92%, 13/14) sequence homology. Reactivity against homologues from other sources is not known.

Immunogen: This affinity purified antibody was prepared from whole rabbit serum produced by repeated immunizations with a synthetic peptide corresponding to a region near the amino terminal end of human Fbp5A protein.

Relevant Links: NCBI [NP_036309](#) Swis-Prot [Q9UKT4](#)

General References:

Hansen,D.V., Loktev,A.V., Ban,K.H. and Jackson,P.K. (2004) Plk1 regulates activation of the anaphase promoting complex by phosphorylating and triggering SCFbetaTrCP-dependent destruction of the APC Inhibitor Emi1. *Mol. Biol. Cell* **15** (12), 5623-5634.

Hsu,J.Y., Reimann,J.D., Sorensen,C.S., Lukas,J. and Jackson,P.K. (2002) E2F-dependent accumulation of hEmi1 regulates S phase entry by inhibiting APC(Cdh1). *Nat. Cell Biol.* **4** (5), 358-366.

Reimann,J.D. and Jackson,P.K. (2002) Emi1 is required for cytostatic factor arrest in vertebrate eggs. *Nature* **416** (6883), 850-854.

Reimann,J.D., Freed,E., Hsu,J.Y., Kramer,E.R., Peters,J.M. and Jackson,P.K. (2001) Emi1 is a mitotic regulator that interacts with Cdc20 and inhibits the anaphase promoting complex. *Cell* **105** (5), 645-655.

Chiaur,D.S., Murthy,S., Cenciarelli,C., Parks,W., Loda,M., Inghirami,G., Demetrick,D. and Pagano,M. (2000) Five human genes encoding F-box proteins: chromosome mapping and analysis in human tumors. *Cytogenet. Cell Genet.* **88** (3-4), 255-258.

Related Products:

#600-401-490	Affinity Purified Anti-Human Fbp5A [Rabbit]
#600-401-485	Affinity Purified Anti-Human Fbp5B [Rabbit]
#611-703-127	Peroxidase Conjugated Affinity Purified Anti-RABBIT IgG (H&L) (DONKEY) MX10
#611-132-122	IRDye® 800 Conjugated Affinity Purified Anti-RABBIT IgG (H&L) (GOAT) MX10
#611-145-122	DyLight™ 680 Conjugated Affinity Purified Anti-RABBIT IgG (H&L) (GOAT) MX10
#B501-0500	BLOTTO (500 g)
#BSA-30	30% BOVINE SERUM ALBUMIN SOL'N in 0.85% sodium chloride (no preservative or stabilizer) (500 ml)
#B304	NORMAL GOAT SERUM (NGS) (10 ml)
#KIA-003	MaxTag™ Anti-RABBIT IgG Kit for Immunoblotting
#MB-070	Blocking Buffer for Fluorescent Western Blotting

Note: This product is for research use only and is not intended for therapeutic or diagnostic applications. Please contact a technical service representative for more information. All products of animal origin manufactured by Rockland Immunochemicals are derived from starting materials of North American origin. Collection was performed in United States Department of Agriculture (USDA) inspected facilities and all materials have been inspected and certified to be free of disease and suitable for exportation. All properties listed are typical characteristics and are not specifications. All suggestions and data are offered in good faith but without guarantee as conditions and methods of use of our products are beyond our control. All claims must be made within 30 days following the date of delivery. The prospective user must determine the suitability of our materials before adopting them on a commercial scale. Suggested uses of our products are not recommendations to use our products in violation of any patent or as a license under any patent of Rockland Immunochemicals, Inc. If you require a commercial license to use this material and do not have one, then return this material, unopened to: Rockland Inc., P.O. BOX 326, Gilbertsville, Pennsylvania, USA.