

### Certificate of Analysis

**Product:** Affinity Purified Anti-BORIS [Rabbit]

**Code:** 600-401-907

**Lot #:** 16923

**Size:** 100 µg

**Physical State:** Liquid (sterile filtered)

**Antibody Concentration:** 1.28 mg/ml (by UV absorbance at 280 nm)

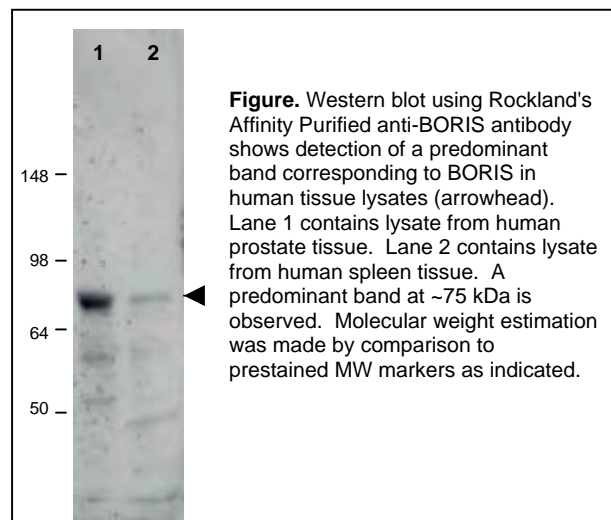
**Buffer:** 0.02 M Potassium Phosphate, 0.15 M Sodium Chloride, pH 7.2

**Stabilizer:** None

**Preservative:** 0.01% (w/v) Sodium Azide

**Storage Conditions:** Store vial at -20° C prior to opening. Dilute only prior to immediate use. For extended storage aliquot contents and freeze at -20° C or below. Avoid cycles of freezing and thawing. Expiration date is one (1) year from date of opening.

**Background Information:** BORIS (**B**rother of the **R**egulator of **I**mprinted **S**ites) also known as CCCTC-binding factor-like protein, is normally only expressed in the testis and expressed in a mutually exclusive manner with CTCF during male germ cell development. However, previous studies have shown that BORIS is abnormally activated in a wide range of human cancers. Expression of BORIS in normally BORIS-negative cells promotes cell growth that may lead to transformation. BORIS maps to the cancer-associated amplification region thought to contain an oncogene or dominant-immortalizing gene. BORIS is a candidate protein for the epigenetic reprogramming factor acting in the male germ line. BORIS is found in both the nucleus and cytoplasm.



**Recommended Dilutions:**

<b>ELISA</b>	1:2,000 - 1:10,000
<b>WESTERN BLOT</b>	1:200 - 1:2,000
<b>IF MICROSCOPY</b>	User Optimized
<b>OTHER APPLICATIONS</b>	User Optimized

**Application Note(s):** This affinity purified antibody has been tested for use in ELISA and by western blot. Specific conditions for reactivity should be optimized by the end user. Expect a predominant band approximately 75 kDa in size corresponding to BORIS by western blotting in the appropriate cell lysate or extract.

**Purity and Specificity:** This affinity-purified antibody is directed against the human BORIS protein. The product was affinity purified from monospecific antiserum by immunoaffinity purification. A BLAST analysis was used to suggest cross reactivity with BORIS proteins from human and chimpanzee. Partial reactivity may occur against BORIS from mouse, dog and rat sources based on varying degrees of homology to the immunizing sequence. Reactivity against homologues from other sources is not known.

**Relevant Link(s):** Swiss Prot: [Q8NI51](#)

NCBI Link [AAM28645](#)

**Protein Sequence:** Human BORIS, 663 aa, predicted MW 75.5 kDa

1	maateisvls	eqftkikele	Impekglkee	ekdgvcrekd	hrspseleae	rtsgafqds
61	leeeevlvla	pseesekyil	tiqtvhftse	avelqdmssl	siqqqegvqv	vvqqpgpgll
121	wleegprqsl	qqcvaisiqq	elyspqemev	lqfhaleenv	mvasedskla	vslaetagli
181	kleeeqeknq	llaertkeql	ffvetmsgde	rsdeivltvs	nsnveeqedq	ptagqadaek
241	akstknqrkt	kgakgtfhcd	vcmftssrms	sfnrhmktht	sekphlchlc	lktfrtvll
301	rnhvnthtgt	rpykncdncm	afvtsgelvr	hrykhthek	pfkscmckya	sveasklkrh
361	vrshgterpf	qccqcsyasr	dytklkrhmr	thsgekpyec	hichtrftqs	gtmkihilkq
421	hgenvpkyqc	phcatiiark	sdlrvhmrl	haysaaelkc	rycsavfher	yaliqhqkth
481	knekrfkckh	csyackqerh	mtahirhtgt	ekpftclscn	kcfrqkqlln	ahrkyhdan
541	fipvykcsk	cgkgfsrwin	lhrhsekcg	geaksaasgk	grtrkrkqt	ilkeatkqgk
601	eaakgwkeaa	ngdeaaaaea	sttkgeqfpg	empvvaeret	tarvkeevde	gvtcemllnt
661	mdk					

**Immunogen:** This affinity purified antibody was prepared from whole rabbit serum produced by repeated immunizations with a synthetic peptide corresponding aa 9-26 of human BORIS protein.

#### General References:

Loukinov D.I., et al. (2002) BORIS, a novel male germ-line-specific protein associated with epigenetic reprogramming events, shares the same 11-zinc-finger domain with CTCF, the insulator protein involved in reading imprinting marks in the soma. *Proc. Natl. Acad. Sci. U.S.A.* **99**:6806-6811.

Shaw P.H., Jelinic P. (2001) Human CTCF homolog, expressed uniquely in testis. Submitted (DEC-2001) to the EMBL/GenBank/DBJ databases.

Klenova E.M., Morse H.C. III, Ohlsson R., Lobanenkova V.V.; (2002) The novel BORIS + CTCF gene family is uniquely involved in the epigenetics of normal biology and cancer. *Semin. Cancer Biol.* **12**:399-414.

#### Related Products:

#611-703-127	Peroxidase Conjugated Affinity Purified Anti-RABBIT IgG (H&L) (DONKEY) MX10
#611-132-122	IRDye800 Conjugated Affinity Purified Anti-RABBIT IgG (H&L) (GOAT) MX10
#MB-070	Blocking Buffer for Fluorescent Western Blotting
#KIA-003	<b>MaxTag</b> <sup>TM</sup> Anti-RABBIT IgG Kit for Immunoblotting
#MB-070	Blocking Buffer for Fluorescent Western Blotting

**USDA Certification:** All products of animal origin manufactured by Rockland Immunochemicals are derived from starting materials of North American origin. Collection was performed in United States Department of Agriculture (USDA) inspected facilities and all materials have been inspected and certified to be free of disease and suitable for exportation.

**Note:** This product is for research use only and is not intended for therapeutic or diagnostic applications. Please contact a technical service representative for more information.