

Certificate of Analysis

Product: Affinity Purified Anti-Human Apc6 pT580 [Rabbit]

Code: 600-401-876

Lot #: 16177

Size: 100 µg

Physical State: Liquid (sterile filtered)

Antibody Concentration: 0.97 mg/ml (by UV absorbance at 280 nm)

Buffer: 0.02 M Potassium Phosphate, 0.15 M Sodium Chloride, pH 7.2

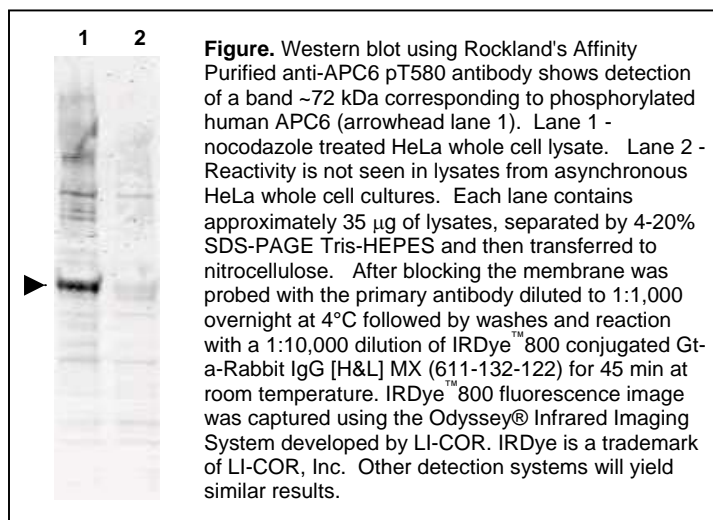
Stabilizer: None

Preservative: 0.01% (w/v) Sodium Azide

Storage Conditions: Store vial at -20° C prior to opening. Dilute only prior to immediate use. For extended storage aliquot contents and freeze at -20° C or below. Avoid cycles of freezing and thawing. Expiration date is one (1) year from date of opening.

Background: APC6 (also known as Cell division cycle protein 16 homolog (CDC16Hs), anaphase promoting complex subunit 6, and cyclosome subunit 6) is a component of the anaphase promoting complex/cyclosome (APC/C), a cell cycle-regulated ubiquitin ligase that controls progression through mitosis and the G₁ phase of the cell cycle. The APC/C is composed of at least 11 subunits. APC6 interacts with PPP5C and CDC20. This protein colocalizes with CDC27 to the centrosome at all stages of the cell cycle and to the mitotic spindle. Splice variants have been described for this protein.

Application Note(s): This affinity purified antibody has been tested for use in ELISA and western blot. Specific conditions for reactivity should be optimized by the end user. Expect a band ~ 72 kDa, 71.5 kDa or 65.9 kDa in size corresponding to isoforms of APC6 by western blotting in the appropriate cell lysate or extract.



Recommended Dilutions:	ELISA	1:1,000 - 1:10,000
	WESTERN BLOT	1:500 - 1:3,000
	IF MICROSCOPY	User Optimized
	OTHER APPLICATIONS	User Optimized

Purity and Specificity: This product is an affinity purified antibody produced by immunoaffinity chromatography using phospho peptide coupled to agarose beads followed by solid phase adsorption(s) against non-phospho peptide and non-specific peptide to remove any unwanted reactivities. This antibody is specific for phosphorylated human APC6 protein at the pT580 residue. BLAST analysis indicates 100 % homology of the immunizing sequence with APC6 from human. No cross reactivity is expected against homologues from other sources. This antibody is expected to react with all isoforms of this protein. Minimal reactivity is expected with the non-phosphorylated form of the protein.

Relevant Link(s): Swis-Prot [Q13042](#) NCBI Link [Q13042](#)

Protein Sequence: Human APC6, 620 aa, predicted MW 71.7 kDa

1	mnlerlrkrv	rqyldqqqq	salfwadkva	slsreepqdi	ywlaqqclylt	aqyhraahal
61	rsrkldkiye	acrylaarch	yaakehqal	dvidmeepin	krfkyklykd	esgfkdpssd
121	wemsqssiks	sicllrgkiy	daldnrllat	ysykealkld	vycfeafdll	tshhmtaqe
181	ekellespl	sklcneeql	lrfffenklk	kynkpsetvi	pesvdglqen	ldvvvslaer
241	hyyncdfkmc	ykltsvmek	dpfhasclpv	higtvlvlnk	anelfylshk	ldlypsnpv
301	swfavgcyyl	mvghknehar	rylskattle	kygpawiay	ghsfaveseh	dqamaayfta
361	aqlmkgchlp	mlyigleygl	tnnsklaerf	fsqalsiape	dpfvmhegv	vafqngewkt
421	aekwfdale	kikaignevt	vdkwepllnn	lghvcrklkk	yaealdyhrq	alvlipqnas
481	tysaigyih	lmgfnenavd	yfhtalgr	ddtfsvtmlg	hciemyigds	edayigadikd
541	klkcydfdv	tmktlknii	ppwdfrefv	ekqtaetgl	tpletsrkt	dsrpsleef
601	eiernesdmm	letsmsdhst				

Immunogen: This affinity purified antibody was prepared from whole rabbit serum produced by repeated immunizations with a synthetic peptide corresponding to amino acids 575-588 of Human Apc6 protein.

General References:

Tugendreich, S., Tomkiel, J., Earnshaw, W. and Hieter, P. (1995) CDC27Hs colocalizes with CDC16Hs to the centrosome and mitotic spindle and is essential for the metaphase to anaphase transition. *Cell* **81** (2), 261-268.

Ollendorff, V. and Donoghue, D.J. (1997) The serine/threonine phosphatase PP5 interacts with CDC16 and CDC27, two tetratricopeptide repeat-containing subunits of the anaphase-promoting complex. *J. Biol. Chem.* **272** (51), 32011-32018.

Kallio, M., Weinstein, J., Daum, J.R., Burke, D.J. and Gorbsky, G.J. (1998) Mammalian p53CDC mediates association of the spindle checkpoint protein Mad2 with the cyclosome/anaphase-promoting complex, and is involved in regulating anaphase onset and late mitotic events. *J. Cell Biol.* **141** (6), 1393-1406.

Related Products:

#611-703-127	Peroxidase Conjugated Affinity Purified Anti-RABBIT IgG (H&L) (DONKEY) MX10
#611-132-122	IRDye800 Conjugated Affinity Purified Anti-RABBIT IgG (H&L) (GOAT) MX10
#MB-070	Blocking Buffer for Fluorescent Western Blotting
#KIA-003	MaxTag™ Anti-RABBIT IgG Kit for Immunoblotting
#MB-070	Blocking Buffer for Fluorescent Western Blotting

USDA Certification: All products of animal origin manufactured by Rockland Immunochemicals are derived from starting materials of North American origin. Collection was performed in United States Department of Agriculture (USDA) inspected facilities and all materials have been inspected and certified to be free of disease and suitable for exportation.

Note: This product is for research use only and is not intended for therapeutic or diagnostic applications. Please contact a technical service representative for more information.