

Certificate of Analysis

Product: Affinity Purified Anti-Ajuba [Rabbit]

Code: 600-401-854

Lot #: 17236

Size: 100 µg

Physical State: Liquid (sterile filtered)

Antibody Concentration: 1.67 mg/ml (by UV absorbance at 280 nm)

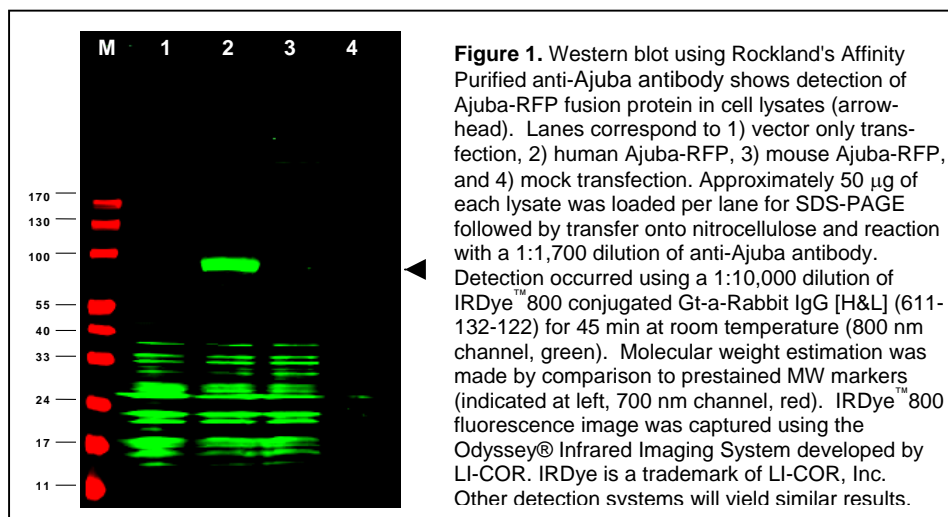
Buffer: 0.02 M Potassium Phosphate, 0.15 M Sodium Chloride, pH 7.2

Stabilizer: None

Preservative: 0.01% (w/v) Sodium Azide

Storage Conditions: Store vial at -20° C prior to opening. Dilute only prior to immediate use. For extended storage aliquot contents and freeze at -20° C or below. Avoid cycles of freezing and thawing. Expiration date is one (1) year from date of opening.

Background Information: Human Ajuba (also called JUB protein and ajuba homolog isoform 1) is a LIM domain protein suggested to bind and regulate the activity of Aurora A. Aurora A, which is involved in cell cycle regulation, is upregulated during mitosis, localizing to the centrosomes and microtubule regions proximal to the centrosomes.



Application Note(s): This affinity purified antibody has been tested for use in ELISA and by western blot. Specific conditions for reactivity should be optimized by the end user. Expect a band approximately 57 kDa in size corresponding to Ajuba by western blotting in the appropriate cell lysate or extract.

Recommended Dilutions:	ELISA	1:20,000 - 1:80,000
	WESTERN BLOT	1:500 - 1:2,500
	IF MICROSCOPY	User Optimized
	OTHER APPLICATIONS	User Optimized

Purity and Specificity: : This affinity purified antibody is directed against human Ajuba. The product was affinity purified from antiserum by immunoaffinity purification. A BLAST analysis was used to suggest reactivity with this protein from human, rat, dog, mouse and chimpanzee based on 100% homology for the immunogen sequence. Cross reactivity with Ajuba protein homologues from other sources has not been determined.

Protein Sequence: Human Ajuba, 528 aa, predicted MW 56.9 kDa

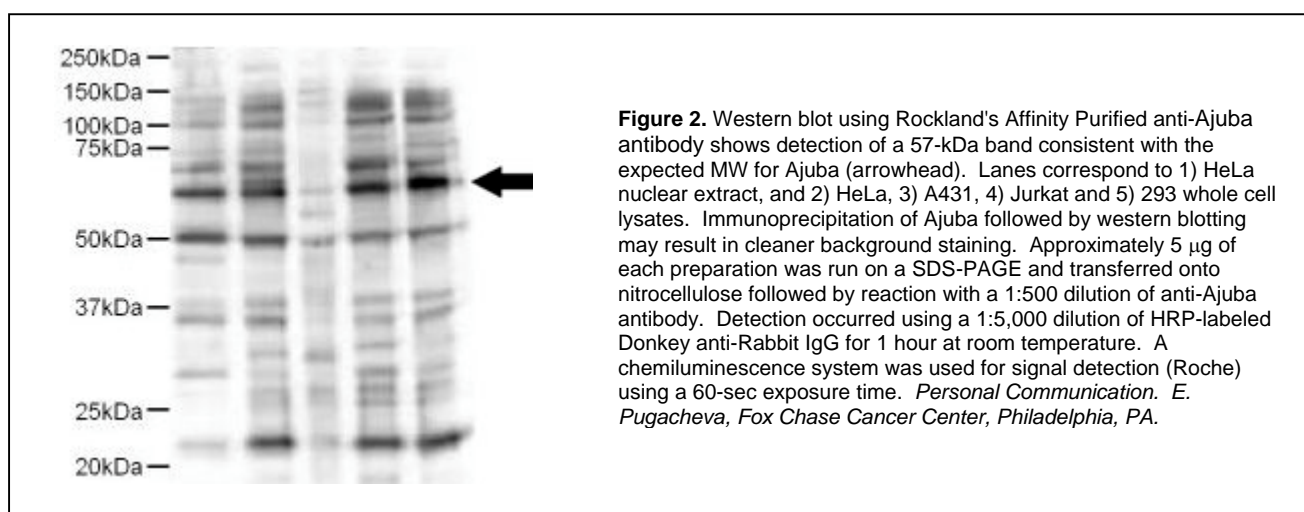
1	merlgekasr	llekfgrkg	essrsgsdgt	pgpgkgrlsg	lggprksgpr	gatggpgdep
61	lepareqgs	daernqrqsf	eapryegsfp	agppptralp	lpqslppdfr	leptapalsp
121	rssfasssas	daskpssprg	slldgagag	gaggsrpsc	rtsgismgyd	qrhgspipag
181	pcifgpplag	apagyspggv	psaypelhaa	ldrlyaqrpa	gfgcqesrhs	yppalgsppg
241	lagagvgaag	plerrgaqpg	rhsvtgygdc	avgaryqdel	tallrlvtgt	ggreagarge
301	psgiepsgle	eppgpfvpea	ararmrepea	redyftgck	cnkgiygqsn	acqaldslyh
361	tqcfvccscg	rtlrcakafys	vngsvyceed	ylfsgfqeaa	ekccvcghli	lekilqamgk
421	syhpgcfrci	vcnkclgdip	ftvdfsnqvy	cvtdyhknya	pkcaacgqpi	lpsegcediv
481	rvismdrdyh	fecyhcedcr	mqlsdeegcc	cfpldghllc	hgchmqrina	rqppanyi

Relevant Link(s):

Swiss Prot: [Q96IF1](#)

NCBI Link [NP_116265](#)

Immunogen: This affinity purified antibody was prepared from whole rabbit serum produced by repeated immunizations with a synthetic peptide corresponding aa 224-239 of Human Ajuba.



General References:

Hirota, T., Kunitoku, N., Sasayama, T., Marumoto, T., Zhang, D., Nitta, M., Hatakeyama, K. and Saya, H. (2003) Aurora-A and an interacting activator, the LIM protein Ajuba, are required for mitotic commitment in human cells. *Cell* 114 (5), 585-598.

Marie, H., et al. (2003) The LIM protein Ajuba is recruited to cadherin-dependent cell junctions through an association with alpha-catenin. *J. Biol. Chem.* 278 (2), 1220-1228.

Goyal, R.K., Lin, P., Kanungo, J., Payne, A.S., Muslin, A.J. and Longmore, G.D. (1999) Ajuba, a novel LIM protein, interacts with Grb2, augments mitogen-activated protein kinase activity in fibroblasts, and promotes meiotic maturation of *Xenopus* oocytes in a Grb2- and Ras-dependent manner. *Mol. Cell. Biol.* 19 (6), 4379-4389.

Related Products:

#611-703-127	Peroxidase Conjugated Affinity Purified Anti-RABBIT IgG (H&L) (DONKEY) MX10
#611-132-122	IRDye800 Conjugated Affinity Purified Anti-RABBIT IgG (H&L) (GOAT) MX10
#MB-070	Blocking Buffer for Fluorescent Western Blotting
#KIA-003	MaxTag™ Anti-RABBIT IgG Kit for Immunoblotting
#MB-070	Blocking Buffer for Fluorescent Western Blotting

USDA Certification: All products of animal origin manufactured by Rockland Immunochemicals are derived from starting materials of North American origin. Collection was performed in United States Department of Agriculture (USDA) inspected facilities and all materials have been inspected and certified to be free of disease and suitable for exportation.

Note: This product is for research use only and is not intended for therapeutic or diagnostic applications. Please contact a technical service representative for more information.