

Certificate of Analysis

Product: anti-CREB-1 (p43) [Rabbit]

Code: 100-401-195

Lot # 19611

Size: 100 μ l

Physical State: Liquid (sterile filtered)

Protein Concentration: 1.19 mg/ml (by UV absorbance at 280 nm)

Buffer: 0.02 M Potassium Phosphate, 0.15 M Sodium Chloride, pH 7.2

Stabilizer: None

Preservative: 0.01% (w/v) Sodium Azide

Application(s): Suitable for immunoprecipitation, immunoblotting, ELISA and supershift assays.

Recommended Dilution(s): This product was assayed against a lysate of 1×10^6 Raji B cells by immunoblot and found to be reactive against CREB-1 (p43), showing a 46 kDa band at a dilution of 1:500 to 1:1,000 followed by reaction with Peroxidase conjugated Affinity Purified anti-Rabbit IgG (H&L) [Goat] (code #611-1302). Anti-CREB-1 (p43) is suitable for detection by immunoblot of human, mouse and rat CREB-1 (p43). This product was also tested in a gel supershift assay and found to be reactive against CREB-1 (p43) using 0.5 to 1.0 μ l per assay. Optimal titers for other applications should be determined by the researcher.

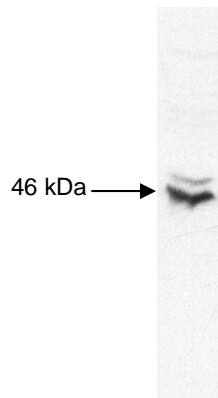


Figure – Anti-CREB is shown to detect CREB-1 present in Raji B cell nuclear extract. Detection occurs using a 1:1,000 dilution of antibody followed by a 1:5,000 dilution of HRP Goat-a-Rabbit IgG with visualization via ECL. Film exposure was approximately 1'. Other detection systems will yield similar results.

Storage Conditions: Store vial at -20° C or below prior to opening. Dilute only prior to immediate use. For extended storage, aliquot contents and freeze at -20° C or below. Avoid cycles of freezing and thawing. Expiration date is six (6) months from date of opening product.

Purity and Specificity: This product was prepared from monospecific antiserum by delipidation and immunoabsorption against an *E.coli* lysate immobilized on agarose beads. Anti-CREB-1 (p43) may react non-specifically with other proteins. A partial cross-reactivity is observed against CREM-1 protein.

Immunogen: CREB-1 (p43) peptide corresponding to a region near the N-terminus of the human protein, conjugated to Keyhole Limpet Hemocyanin (KLH).

Reference(s):

Moreno, C.S., Beresford, G., Louis-Plence, P., Morris, A.C. and Boss, J.M. (1999) CREB regulates MHC class II expression in a CIITA dependent manner. *Immunity* **10**: 143-151.

Note: This product is for research use only and is not intended for therapeutic or diagnostic applications. Please contact a technical service representative for more information.

All products of animal origin manufactured by Rockland Immunochemicals are derived from starting materials of North American origin. Collection was performed in United States Department of Agriculture (USDA) inspected facilities and all materials have been inspected and certified to be free of disease and suitable for exportation.

All properties listed are typical characteristics and are not specifications. All suggestions and data are offered in good faith but without guarantee as conditions and methods of use of our products are beyond our control. The prospective user must determine the suitability of our materials before adopting them on a commercial scale. Suggested uses of our products are not recommendations to use our products in violation of any patent or as a license under any patent of Rockland Immunochemicals, Inc. If you require a commercial license to use this material and do not have one, then return this material, unopened to: Rockland Inc., P.O. BOX 326, Gilbertville, Pennsylvania, USA.