

Product Specification Sheet

Product: anti-Aldolase [Rabbit Muscle] [Goat]

Code: 100-1141

Lot # 2214

Size: 2.0 ml

Physical State: Lyophilized

Antibody Concentration: 90.0 mg/ml (by Refractometry)

Buffer: 0.02 M Potassium Phosphate, 0.15 M Sodium Chloride, pH 7.2

Stabilizer: None

Preservative: 0.01% (w/v) Sodium Azide

Application(s): suitable for immunoblotting (western or dot blot), ELISA, immunoprecipitation and most immunological methods requiring high titer and specificity.

Recommended Dilution(s): This product has been assayed against 1.0 µg of Aldolase [Rabbit Muscle] in a standard sandwich ELISA using Peroxidase conjugated Affinity Purified anti-Goat IgG [H&L] (Rabbit) code #605-4302 and (ABTS (2,2'-azino-bis-[3-ethylbenthiiazoline-6-sulfonic acid]) code # ABTS-100 as a substrate for 30 minutes at room temperature. A working dilution of 1:3,000 to 1:12,000 of the reconstitution concentration is suggested for this product. Use approximately 5 ul of antibody to immunoprecipitate 50 ul of protein lysate. Optimal titers for other applications should be determined by the researcher.

Storage Conditions: Store vial at 4° C prior to restoration. Restore with 2.0 ml of deionized water (or equivalent). Centrifuge product if not completely clear after standing at room temperature. This product is stable for several weeks at 4° C as an undiluted liquid. Dilute only prior to immediate use. For extended storage aliquot contents and freeze at -20° C or below. Avoid cycles of freezing and thawing. Expiration date is one (1) year from date of restoration.

Purity and Specificity: This product was prepared from monospecific antiserum by a delipidation and defibrination. Assay by immunoelectrophoresis resulted in a single precipitin arc against purified and partially purified Aldolase [Rabbit Muscle]. This antibody will detect human Aldolase. Cross reactivity against Aldolase from other tissues and species may also occur. It has been reported that this antibody can detect human Aldolase on immunoblot showing a 41 kDa band in lysates from MCF7, NMB231 and HBL100 cell lines.

Immunogen: Aldolase [Rabbit Muscle]

Antibody Reference: Zaman et al., (1999) *J. Neurosci* **19** (22):9821-9830

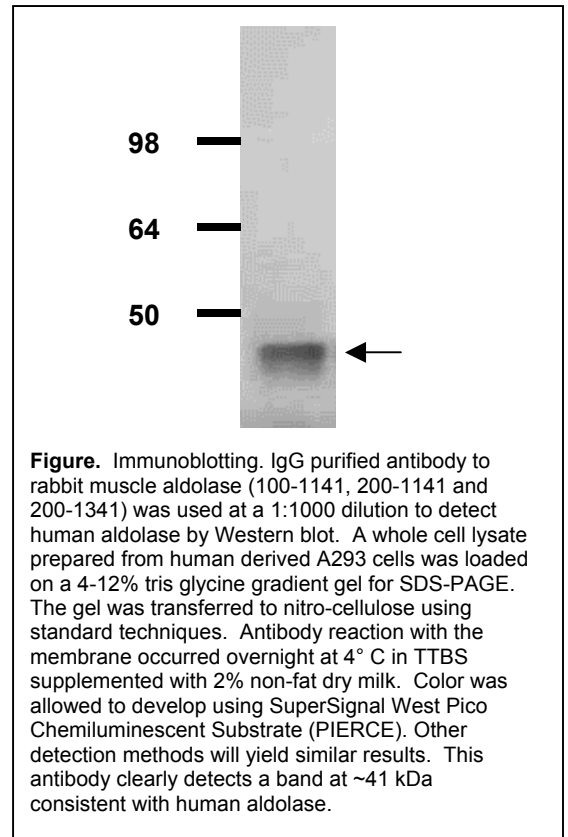


Figure. Immunoblotting. IgG purified antibody to rabbit muscle aldolase (100-1141, 200-1141 and 200-1341) was used at a 1:1000 dilution to detect human aldolase by Western blot. A whole cell lysate prepared from human derived A293 cells was loaded on a 4-12% tris glycine gradient gel for SDS-PAGE. The gel was transferred to nitro-cellulose using standard techniques. Antibody reaction with the membrane occurred overnight at 4° C in TTBS supplemented with 2% non-fat dry milk. Color was allowed to develop using SuperSignal West Pico Chemiluminescent Substrate (PIERCE). Other detection methods will yield similar results. This antibody clearly detects a band at ~41 kDa consistent with human aldolase.

Note: This product is for research use only and is not intended for therapeutic or diagnostic applications. Please contact a technical service representative for more information.