

TrueBlot®

Generate Clear, Publication-Quality Data in Immunoprecipitation (IP), Western Blot (WB), and IP-Western Blot

Detects the native disulfide form of IgG and reduce interference of the ~55 kDa and ~23 kDa light chains of the immunoprecipitating antibody

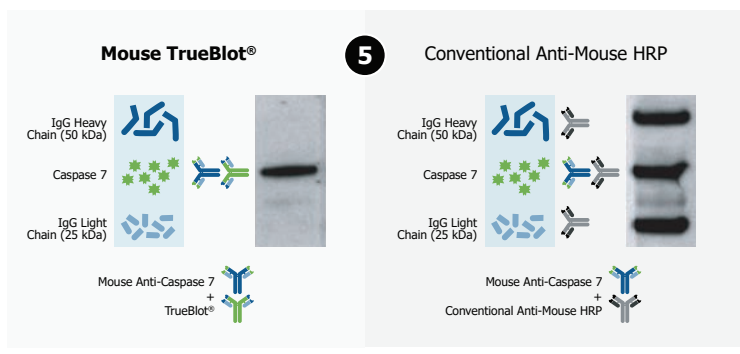
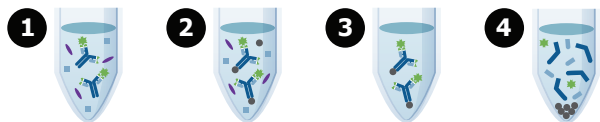
The monoclonal nature of TrueBlot® provides high specificity that can be used in WB experiments without an IP step

Generates unparalleled clarity in assay results and high-quality imaging suitable for reproduction and publication



Rockland's TrueBlot® line of products consist of both IP beads and monoclonal secondary antibodies that can be used together or separately to achieve exceptional results in the purification and detection of proteins.

Simply substitute TrueBlot® secondary antibodies with your current conventional secondary antibody in protocols involving immunoblotting of immunoprecipitated proteins or when studying post-translational protein modifications (phosphorylation) and protein-protein interactions.



Designed as a reporter for IP assays with high specificity and unique detection properties, TrueBlot® secondary antibodies avoid interference from denatured antibody fragments and non-specific binding of other sample contaminants, providing unhindered detection of blotted target bands.

TrueBlot® Epitope Kits	Applications	Catalog #
IP & WB Kit for GFP	IP, WB, and IP-WB	88-8887-215
IP & WB Kit for 6X HIS	IP, WB, and IP-WB	88-8887-215
IP & WB Kit for DYKDDDK (FLAG)	IP, WB, and IP-WB	88-8887-215

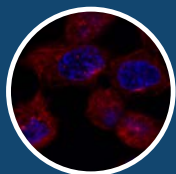
The TrueBlot® IP and WB kits for epitope tags contain the critical supporting reagents, buffers, and substrates for IP and WB of the appropriate tagged proteins. Using TrueBlot® will allow easy enrichment and clear monitoring of proteins.

TrueBlot® Products	Applications	Catalog #	Size
TrueBlot® Anti-Mouse Ig IP Beads	IP, IP-WB	00-8811-25	2.5 mL
TrueBlot® Anti-Rabbit Ig IP Beads	IP, IP-WB	00-8800-25	2.5 mL
TrueBlot® Anti-Goat Ig IP Beads	IP, IP-WB	00-8844-25	2.5 mL
Mouse TrueBlot® ULTRA Anti-Mouse Ig HRP	IP, WB	18-8817-*	20–200 µL
Rabbit TrueBlot® Anti-Rabbit IgG HRP	IP, WB	18-8816-*	50–200 µL
Goat TrueBlot® Anti-Goat IgG HRP	WB	18-8814-*	50–200 µL
Mouse TrueBlot® Set (with IP Beads)	IP, WB	88-7788-31	50 µL
Rabbit TrueBlot® Set (with IP Beads)	IP, WB	88-1688-31	50 µL
Goat TrueBlot® Set (with IP Beads)	IP, WB	88-1488-31	50 µL
Mouse TrueBlot® WB Kit	WB	88-8887-31	50 µL
Rabbit TrueBlot® WB Kit	WB	88-8886-31	50 µL
Goat TrueBlot® WB Kit	WB	88-8884-31	50 µL

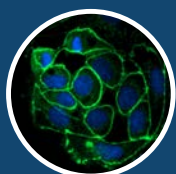
*Multiple sizes available

Fluorescent TrueBlot®

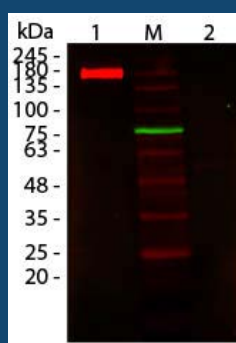
Rockland's Fluorescent TrueBlot® monoclonal secondary antibodies combine the power and specificity of our original HRP-conjugated TrueBlot® monoclonal secondary antibodies with the versatility of fluorescent and near-infrared (IR) dyes. Conjugation of highly-optimized TrueBlot® secondary antibodies to an assortment of fluorescent labels results in multi-purpose reporter molecules that can be used in a variety of immunoassays, including multiplex experiments.



Immunofluorescence microscopy of anti- α -tubulin primary antibody in A431 cells using DyLight™ anti-mouse Ig.



Immunofluorescence microscopy of anti-ZO-1 primary antibody in Caco-2 cells using FITC-conjugated fluorescent TrueBlot® anti-rabbit IgG.



Unique Detection Properties: Fluorescent TrueBlot® secondary antibodies detect the non-reduced form of IgG (Lane 1) over the reduced form of IgG (Lane 2). Lane M represents the molecular weight marker. The expected band for non-reduced IgG is ~160 kDa. **Note:** Observed non-reduced bands migrate at a slightly higher molecular weight.

Fluorescent TrueBlot® Products	Applications	Catalog #	Size
Fluorescent TrueBlot® Anti-Mouse IgG Fluorescein	IP, WB	18-0217-32	100 µL
Fluorescent TrueBlot® Anti-Rabbit IgG Fluorescein	IP, WB	18-0216-32	100 µL
Fluorescent TrueBlot® Anti-Mouse IgG DyLight™ 680	IP, WB	18-4417-32	100 µL
Fluorescent TrueBlot® Anti-Rabbit IgG DyLight™ 680	IP, WB	18-4416-32	100 µL

QUESTIONS?

Feel free to contact us
800.656.7625

✉ sales@rockland.com

🌐 rockland.com/trueblot